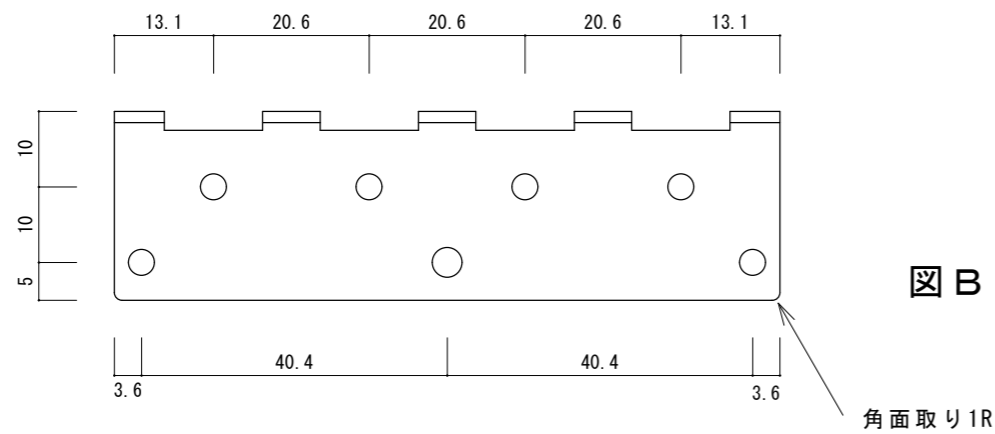
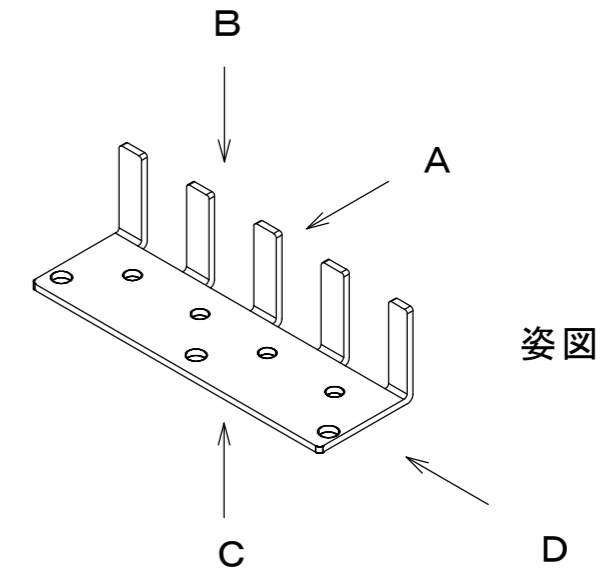
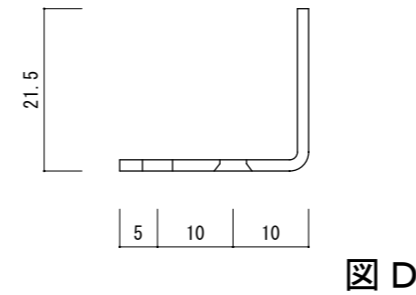
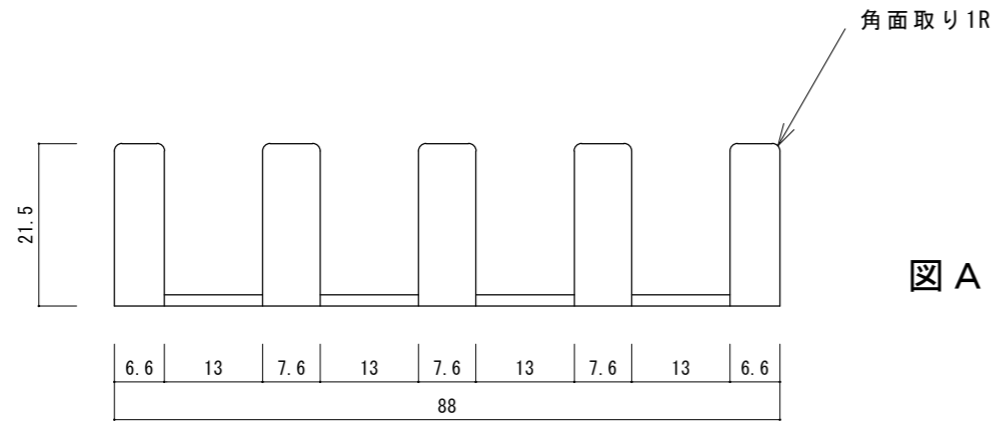
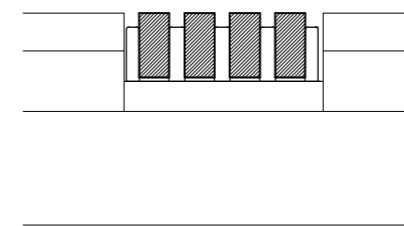
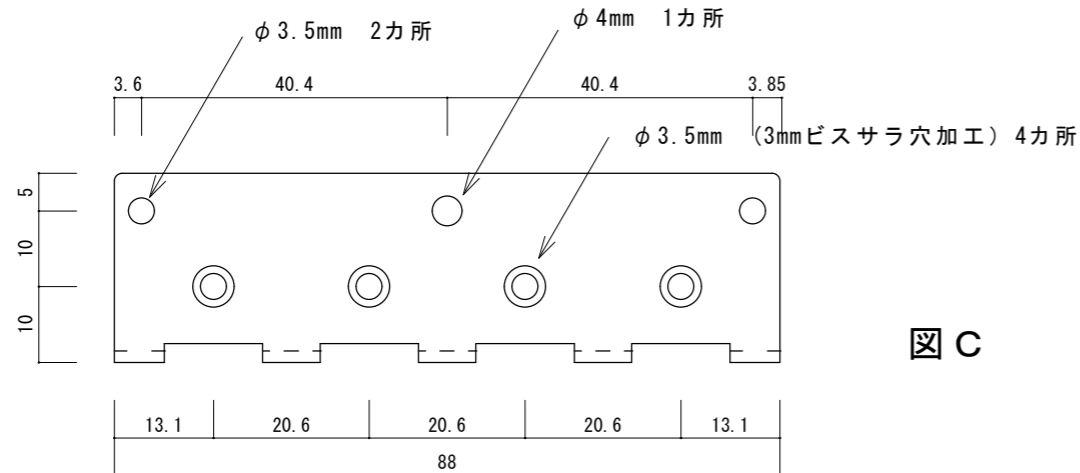
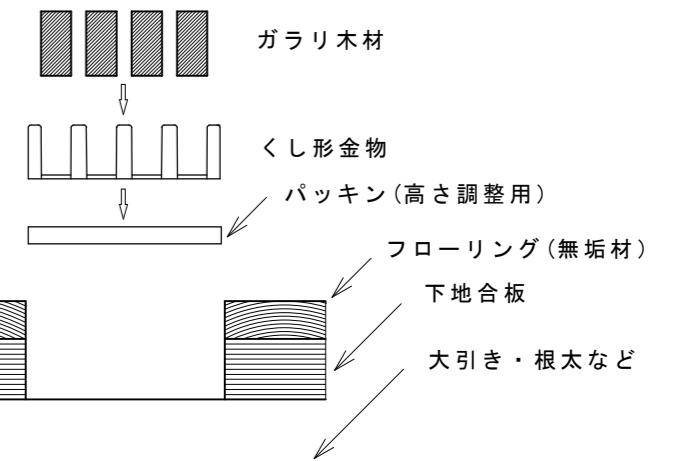


# くし型金物90-4型図面



SUS430 t=1.5mm



収まり例

木製ガラリ製作補助金物  
くし型金物 90型  
TP-90-4

名称	くし型金物
品番	TP-90-4
寸法	W88×D25×H21.5
材質	SUS430 (18クロム系ステンレス)
開口面積/率	約310cm <sup>2</sup> /m 約34% ※60mmの受け材@333mmの場合の参考値。